



Oboe

# Region 5 All-Region Scales

*...must be performed from memory*

Bb Major



Musical notation for the Bb Major scale, starting on C4 and ending on C5. The scale is written in treble clef with a key signature of two flats (Bb and Eb). The notes are: C4, D4, Eb4, E4, F4, G4, Ab4, A4, Bb4, B4, C5.

F Major



Musical notation for the F Major scale, starting on F3 and ending on F4. The scale is written in treble clef with a key signature of one flat (Bb). The notes are: F3, G3, Ab3, A3, Bb3, B3, C4, D4, E4, F4.

C Major



Musical notation for the C Major scale, starting on C4 and ending on C5. The scale is written in treble clef with a key signature of no sharps or flats. The notes are: C4, D4, E4, F4, G4, A4, B4, C5.

G Major



Musical notation for the G Major scale, starting on G3 and ending on G4. The scale is written in treble clef with a key signature of one sharp (F#). The notes are: G3, A3, B3, C4, D4, E4, F#4, G4.

D Major



Musical notation for the D Major scale, starting on D3 and ending on D4. The scale is written in treble clef with a key signature of two sharps (F# and C#). The notes are: D3, E3, F#3, G3, A3, B3, C#4, D4.

A Major



Musical notation for the A Major scale, starting on A2 and ending on A3. The scale is written in treble clef with a key signature of three sharps (F#, C#, and G#). The notes are: A2, B2, C#3, D3, E3, F#3, G#3, A3.

Db Major



Musical notation for the Db Major scale, starting on Db3 and ending on Db4. The scale is written in treble clef with a key signature of five flats (Bb, Eb, Ab, and Db). The notes are: Db3, Eb3, Fb3, Gb3, Ab3, Bb3, C4, Db4.

Ab Major



Musical notation for the Ab Major scale, starting on Ab2 and ending on Ab3. The scale is written in treble clef with a key signature of four flats (Bb, Eb, Ab, and Db). The notes are: Ab2, Bb2, Cb3, Db3, Eb3, Fb3, Gb3, Ab3.

Eb Major



Musical notation for the Eb Major scale, starting on Eb2 and ending on Eb3. The scale is written in treble clef with a key signature of three flats (Bb, Eb, and Ab). The notes are: Eb2, Fb2, Gb2, Ab2, Bb2, Cb3, Db3, Eb3.

Chromatic Scale



Musical notation for the Chromatic Scale, starting on C4 and ending on C5. The scale is written in treble clef. The notes are: C4, C#4, D4, D#4, E4, E#4, F4, F#4, G4, G#4, A4, A#4, B4, B#4, C5. The scale is performed in two directions: ascending and descending. Each note is marked with a '3' above it, indicating a triplet. The descending scale includes accidentals: C5, B#4, B4, A#4, A4, G#4, G4, F#4, F4, E#4, E4, D#4, D4, C#4, C4.



Bassoon

# Region 5 All-Region Scales

*...must be performed from memory*

Bb Major

Musical notation for the Bb Major scale in bass clef, 4/4 time. The scale consists of 11 notes: Bb, C, D, Eb, F, G, Ab, Bb, C, D, Eb. The notation includes a key signature of two flats and a common time signature of 4/4. The scale is written as a single line of music with a slur over the entire sequence.

F Major

Musical notation for the F Major scale in bass clef, 4/4 time. The scale consists of 11 notes: F, G, A, Bb, C, D, E, F, G, A, Bb. The notation includes a key signature of one flat and a common time signature of 4/4. The scale is written as a single line of music with a slur over the entire sequence.

C Major

Musical notation for the C Major scale in bass clef, 4/4 time. The scale consists of 11 notes: C, D, E, F, G, A, B, C, D, E, F. The notation includes a key signature of no sharps or flats and a common time signature of 4/4. The scale is written as a single line of music with a slur over the entire sequence.

G Major

Musical notation for the G Major scale in bass clef, 4/4 time. The scale consists of 11 notes: G, A, B, C, D, E, F#, G, A, B, C. The notation includes a key signature of one sharp and a common time signature of 4/4. The scale is written as a single line of music with a slur over the entire sequence.

D Major

Musical notation for the D Major scale in bass clef, 4/4 time. The scale consists of 11 notes: D, E, F#, G, A, B, C#, D, E, F#, G. The notation includes a key signature of two sharps and a common time signature of 4/4. The scale is written as a single line of music with a slur over the entire sequence.

A Major

Musical notation for the A Major scale in bass clef, 4/4 time. The scale consists of 11 notes: A, B, C#, D, E, F#, G#, A, B, C#, D. The notation includes a key signature of three sharps and a common time signature of 4/4. The scale is written as a single line of music with a slur over the entire sequence.

Db Major

Musical notation for the Db Major scale in bass clef, 4/4 time. The scale consists of 11 notes: Db, Eb, F, G, Ab, Bb, C, Db, Eb, F, G. The notation includes a key signature of four flats and a common time signature of 4/4. The scale is written as a single line of music with a slur over the entire sequence.

Ab Major

Musical notation for the Ab Major scale in bass clef, 4/4 time. The scale consists of 11 notes: Ab, Bb, C, D, Eb, F, G, Ab, Bb, C, D. The notation includes a key signature of three flats and a common time signature of 4/4. The scale is written as a single line of music with a slur over the entire sequence.

Eb Major

Musical notation for the Eb Major scale in bass clef, 4/4 time. The scale consists of 11 notes: Eb, F, G, Ab, Bb, C, D, Eb, F, G, Ab. The notation includes a key signature of three flats and a common time signature of 4/4. The scale is written as a single line of music with a slur over the entire sequence.

Chromatic Scale

Musical notation for the Chromatic Scale in bass clef, 4/4 time. The scale consists of 24 notes, ascending and then descending. The notation includes a key signature of no sharps or flats and a common time signature of 4/4. The scale is written as two lines of music, each with a slur over the entire sequence. Triplet markings (the number 3) are placed above the notes in the first line and below the notes in the second line.

Clarinet

# Region 5 All-Region Scales

*...must be performed from memory*

C Major / Bb Concert

Musical notation for the C Major / Bb Concert scale. The scale is written in treble clef with a 4/4 time signature. It consists of two lines of music. The first line contains the ascending scale: C4, D4, E4, F4, G4, A4, B4, C5. The second line contains the descending scale: B4, A4, G4, F4, E4, D4, C4. A slur covers the entire scale, and a fermata is placed over the final C4 note.

G Major / F Concert

Musical notation for the G Major / F Concert scale. The scale is written in treble clef with a 4/4 time signature. It consists of two lines of music. The first line contains the ascending scale: G4, A4, B4, C5, D5, E5, F5, G5. The second line contains the descending scale: F5, E5, D5, C5, B4, A4, G4. A slur covers the entire scale, and a fermata is placed over the final G4 note.

D Major / C Concert

Musical notation for the D Major / C Concert scale. The scale is written in treble clef with a 4/4 time signature. It consists of two lines of music. The first line contains the ascending scale: D4, E4, F#4, G4, A4, B4, C5, D5. The second line contains the descending scale: C5, B4, A4, G4, F#4, E4, D4. A slur covers the entire scale, and a fermata is placed over the final D4 note.

A Major / G Concert

Musical notation for the A Major / G Concert scale. The scale is written in treble clef with a 4/4 time signature. It consists of two lines of music. The first line contains the ascending scale: A4, B4, C#4, D4, E4, F#4, G4, A4. The second line contains the descending scale: G4, F#4, E4, D4, C#4, B4, A4. A slur covers the entire scale, and a fermata is placed over the final A4 note.

E Major / D Concert

Musical notation for the E Major / D Concert scale. The scale is written in treble clef with a 4/4 time signature. It consists of two lines of music. The first line contains the ascending scale: E4, F#4, G#4, A4, B4, C#4, D5, E5. The second line contains the descending scale: D5, C#4, B4, A4, G#4, F#4, E4. A slur covers the entire scale, and a fermata is placed over the final E4 note.

B Major / A Concert

Musical notation for the B Major / A Concert scale. The scale is written in treble clef with a 4/4 time signature. It consists of two lines of music. The first line contains the ascending scale: B4, C#4, D#4, E4, F#4, G#4, A4, B4. The second line contains the descending scale: A4, G#4, F#4, E4, D#4, C#4, B4. A slur covers the entire scale, and a fermata is placed over the final B4 note.

Eb Major / Db Concert

Musical notation for the Eb Major / Db Concert scale. The scale is written in treble clef with a 4/4 time signature. It consists of two lines of music. The first line contains the ascending scale: Eb4, F4, G4, Ab4, Bb4, C5, Db5, Eb5. The second line contains the descending scale: Eb5, Db5, C5, Bb4, Ab4, G4, F4, Eb4. A slur covers the entire scale, and a fermata is placed over the final Eb4 note.

Bb Major / Ab Concert

Musical notation for the Bb Major / Ab Concert scale. The scale is written in treble clef with a 4/4 time signature. It consists of two lines of music. The first line contains the ascending scale: Bb4, C4, D4, Eb4, F4, G4, Ab4, Bb4. The second line contains the descending scale: Bb4, Ab4, G4, F4, Eb4, D4, C4, Bb4. A slur covers the entire scale, and a fermata is placed over the final Bb4 note.

F Major / Eb Concert

Musical notation for the F Major / Eb Concert scale. The scale is written in treble clef with a 4/4 time signature. It consists of two lines of music. The first line contains the ascending scale: F4, G4, A4, Bb4, C4, D4, Eb4, F4. The second line contains the descending scale: F4, Eb4, D4, C4, Bb4, A4, G4, F4. A slur covers the entire scale, and a fermata is placed over the final F4 note.

Chromatic Scale

Musical notation for the Chromatic Scale. The scale is written in treble clef with a 4/4 time signature. It consists of two lines of music. The first line contains the ascending chromatic scale: C4, C#4, D4, D#4, E4, E#4, F4, F#4, G4, G#4, A4, A#4, B4, B#4, C5. The second line contains the descending chromatic scale: C5, B#4, B4, A#4, A4, G#4, G4, F#4, F4, E#4, E4, D#4, D4, C#4, C4. Slurs and fermatas are used to indicate the continuous nature of the scale.



Alto/Bari Sax

# Region 5 All-Region Scales

*...must be performed from memory*

G Major / Bb Concert



D Major / F Concert



A Major / C Concert



E Major / G Concert



B Major / D Concert



Gb Major / A Concert



Bb Major / Db Concert



F Major / Ab Concert



C Major / Eb Concert



Chromatic Scale



# Region 5 All-Region Scales

*...must be performed from memory*

Tenor Sax

C Major / Bb Concert



G Major / F Concert



D Major / C Concert



A Major / G Concert



E Major / D Concert



B Major / A Concert



Eb Major / Db Concert



Bb Major / Ab Concert



F Major / Eb Concert



Chromatic Scale





Trumpet

# Region 5 All-Region Scales

*...must be performed from memory*

C Major / Bb Concert



G Major / F Concert



D Major / C Concert



A Major / G Concert



E Major / D Concert



B Major / A Concert



Eb Major / Db Concert



Bb Major / Ab Concert



F Major / Eb Concert



Chromatic Scale



Horn

# Region 5 All-Region Scales

*...must be performed from memory*

F Major / Bb Concert

Musical notation for the F Major / Bb Concert scale, consisting of two staves. The first staff shows the ascending scale with a slur over the final four notes. The second staff shows the descending scale with a slur over the final four notes.

C Major / F Concert

Musical notation for the C Major / F Concert scale, consisting of two staves. The first staff shows the ascending scale with a slur over the final four notes. The second staff shows the descending scale with a slur over the final four notes.

G Major / C Concert

Musical notation for the G Major / C Concert scale, consisting of two staves. The first staff shows the ascending scale with a slur over the final four notes. The second staff shows the descending scale with a slur over the final four notes.

D Major / G Concert

Musical notation for the D Major / G Concert scale, consisting of two staves. The first staff shows the ascending scale with a slur over the final four notes. The second staff shows the descending scale with a slur over the final four notes.

A Major / D Concert

Musical notation for the A Major / D Concert scale, consisting of two staves. The first staff shows the ascending scale with a slur over the final four notes. The second staff shows the descending scale with a slur over the final four notes.

E Major / A Concert

Musical notation for the E Major / A Concert scale, consisting of two staves. The first staff shows the ascending scale with a slur over the final four notes. The second staff shows the descending scale with a slur over the final four notes.

Ab Major / Db Concert

Musical notation for the Ab Major / Db Concert scale, consisting of two staves. The first staff shows the ascending scale with a slur over the final four notes. The second staff shows the descending scale with a slur over the final four notes.

Eb Major / Ab Concert

Musical notation for the Eb Major / Ab Concert scale, consisting of two staves. The first staff shows the ascending scale with a slur over the final four notes. The second staff shows the descending scale with a slur over the final four notes.

Bb Major / Eb Concert

Musical notation for the Bb Major / Eb Concert scale, consisting of two staves. The first staff shows the ascending scale with a slur over the final four notes. The second staff shows the descending scale with a slur over the final four notes.

Chromatic Scale

Musical notation for the Chromatic Scale, consisting of two staves. The first staff shows the ascending chromatic scale with triplets over the first four notes and the last two notes. The second staff shows the descending chromatic scale with triplets over the first four notes and the last two notes.



Trombone

# Region 5 All-Region Scales

*...must be performed from memory*

Bb Major



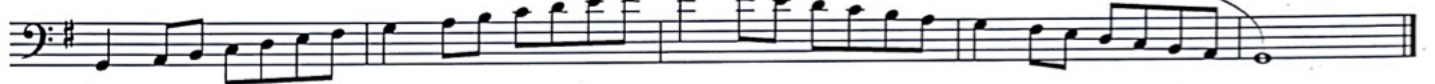
F Major



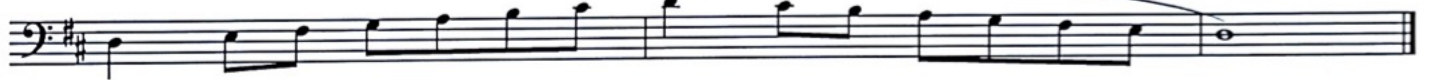
C Major



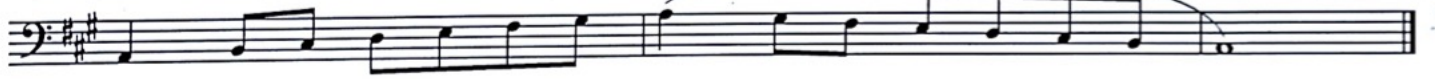
G Major



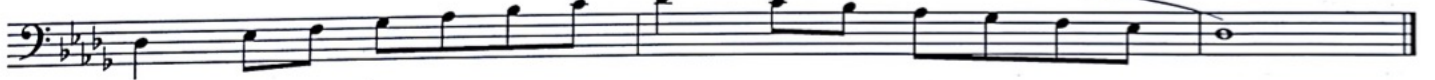
D Major



A Major



Db Major



Ab Major



Eb Major



Chromatic Scale



Euphonium

# Region 5 All-Region Scales

*...must be performed from memory*

**Bb Major**

Musical notation for the Bb Major scale in bass clef, 4/4 time. The scale consists of 10 notes: Bb, C, D, Eb, F, G, Ab, Bb, C, D. The first four notes are beamed together, and the last four notes are also beamed together. A slur covers the entire scale.

**F Major**

Musical notation for the F Major scale in bass clef, 4/4 time. The scale consists of 10 notes: F, G, A, Bb, C, D, E, F, G, A. The first four notes are beamed together, and the last four notes are also beamed together. A slur covers the entire scale.

**C Major**

Musical notation for the C Major scale in bass clef, 4/4 time. The scale consists of 10 notes: C, D, E, F, G, A, B, C, D, E. The first four notes are beamed together, and the last four notes are also beamed together. A slur covers the entire scale.

**G Major**

Musical notation for the G Major scale in bass clef, 4/4 time. The scale consists of 10 notes: G, A, B, C, D, E, F#, G, A, B. The first four notes are beamed together, and the last four notes are also beamed together. A slur covers the entire scale.

**D Major**

Musical notation for the D Major scale in bass clef, 4/4 time. The scale consists of 10 notes: D, E, F#, G, A, B, C#, D, E, F#. The first four notes are beamed together, and the last four notes are also beamed together. A slur covers the entire scale.

**A Major**

Musical notation for the A Major scale in bass clef, 4/4 time. The scale consists of 10 notes: A, B, C#, D, E, F#, G#, A, B, C#. The first four notes are beamed together, and the last four notes are also beamed together. A slur covers the entire scale.

**Db Major**

Musical notation for the Db Major scale in bass clef, 4/4 time. The scale consists of 10 notes: Db, Eb, F, G, Ab, Bb, C, Db, Eb, F. The first four notes are beamed together, and the last four notes are also beamed together. A slur covers the entire scale.

**Ab Major**

Musical notation for the Ab Major scale in bass clef, 4/4 time. The scale consists of 10 notes: Ab, Bb, C, D, Eb, F, G, Ab, Bb, C. The first four notes are beamed together, and the last four notes are also beamed together. A slur covers the entire scale.

**Eb Major**

Musical notation for the Eb Major scale in bass clef, 4/4 time. The scale consists of 10 notes: Eb, F, G, Ab, Bb, C, D, Eb, F, G. The first four notes are beamed together, and the last four notes are also beamed together. A slur covers the entire scale.

**Chromatic Scale**

Musical notation for the chromatic scale in bass clef, 4/4 time. The scale consists of 24 notes: C, C#, D, D#, E, E#, F, F#, G, G#, A, A#, B, B#, C. The first four notes are beamed together, and the last four notes are also beamed together. A slur covers the entire scale. Triplet markings (3) are placed above the first four notes and below the last four notes.



Tuba

# Region 5 All-Region Scales

*...must be performed from memory*

Bb Major

Musical notation for the Bb Major scale in bass clef, 4/4 time. The scale consists of 10 notes: Bb, C, D, Eb, F, G, Ab, Bb, C, D. The first five notes are quarter notes, and the last five notes are quarter notes with a slur over the entire scale.

F Major

Musical notation for the F Major scale in bass clef, 4/4 time. The scale consists of 10 notes: F, G, A, Bb, C, D, E, F, G, A. The first five notes are quarter notes, and the last five notes are quarter notes with a slur over the entire scale.

C Major

Musical notation for the C Major scale in bass clef, 4/4 time. The scale consists of 10 notes: C, D, E, F, G, A, B, C, D, E. The first five notes are quarter notes, and the last five notes are quarter notes with a slur over the entire scale.

G Major

Musical notation for the G Major scale in bass clef, 4/4 time. The scale consists of 10 notes: G, A, B, C, D, E, F#, G, A, B. The first five notes are quarter notes, and the last five notes are quarter notes with a slur over the entire scale.

D Major

Musical notation for the D Major scale in bass clef, 4/4 time. The scale consists of 10 notes: D, E, F#, G, A, B, C#, D, E, F#. The first five notes are quarter notes, and the last five notes are quarter notes with a slur over the entire scale.

A Major

Musical notation for the A Major scale in bass clef, 4/4 time. The scale consists of 10 notes: A, B, C#, D, E, F#, G#, A, B, C#. The first five notes are quarter notes, and the last five notes are quarter notes with a slur over the entire scale.

Db Major

Musical notation for the Db Major scale in bass clef, 4/4 time. The scale consists of 10 notes: Db, Eb, F, G, Ab, Bb, C, Db, Eb, F. The first five notes are quarter notes, and the last five notes are quarter notes with a slur over the entire scale.

Ab Major

Musical notation for the Ab Major scale in bass clef, 4/4 time. The scale consists of 10 notes: Ab, Bb, C, D, Eb, F, G, Ab, Bb, C. The first five notes are quarter notes, and the last five notes are quarter notes with a slur over the entire scale.

Eb Major

Musical notation for the Eb Major scale in bass clef, 4/4 time. The scale consists of 10 notes: Eb, F, G, Ab, Bb, C, D, Eb, F, G. The first five notes are quarter notes, and the last five notes are quarter notes with a slur over the entire scale.

Chromatic Scale

Musical notation for the Chromatic Scale in bass clef, 4/4 time. The scale consists of 24 notes, ascending and then descending. Each note is a quarter note, and there are triplets indicated above and below the notes. The ascending scale starts on C and ends on C#, and the descending scale starts on C# and ends on C.